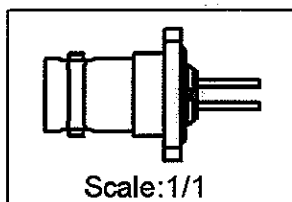
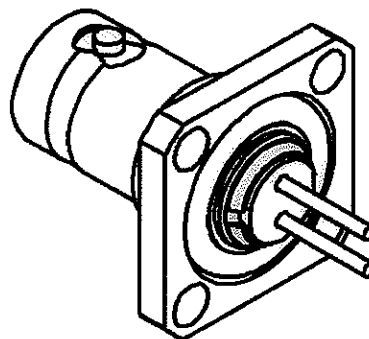
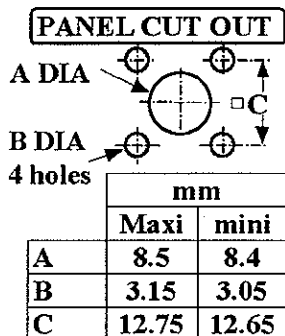
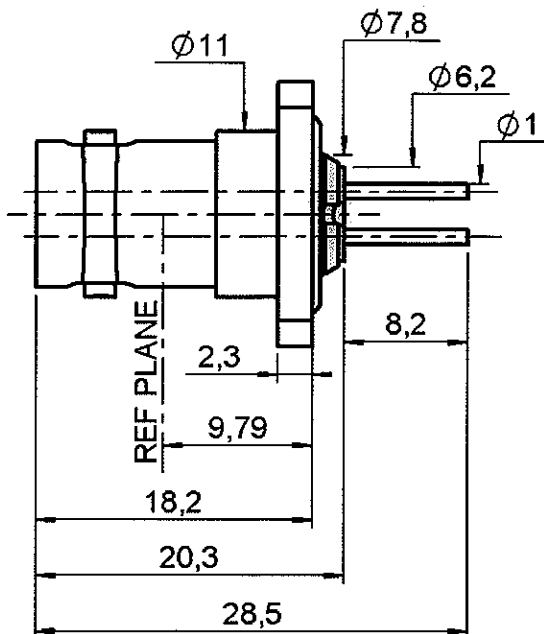
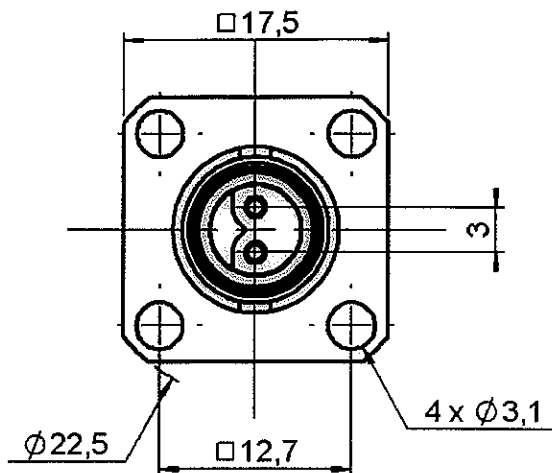


**SQUARE FLANGE RECEPTACLE SEALED**

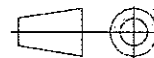
**R605.425.000**

**SOLDER CENTER CONTACTS**

Series : BR2



All dimensions are in mm.



COMPONENTS	MATERIALS	PLATINGS (µm)
BODY	BRASS	NICKEL 2
CENTER CONTACT	BERYLLIUM COPPER	GOLD 1.3 OVER NICKEL 2
OUTER CONTACT	-	-
INSULATOR	POLYAMID 6/6 (NYLON)	-
GASKET	SILICONE RUBBER	-
OTHERS PARTS	PTFE	-
.	-	-
.	-	-

Issue : 0045 A

In the effort to improve our products, we reserve the right to make changes judged to be necessary.



**SQUARE FLANGE RECEPTACLE SEALED**

**R605.425.000**

**SOLDER CENTER CONTACTS**

Series : BR2

**PACKAGING**

Standard	Unit	Other
	'W' option	Contact us

**SPECIFICATION**

**ELECTRICAL CHARACTERISTICS**

**ENVIRONMENTAL**

Impedance		50 Ω
Frequency		0-0.5 GHz
VSWR	NA +	0.000 x F(GHz) Maxi
Insertion loss		NA √F(GHz) dB Maxi
RF leakage	-(	NA - F(GHz)) dB Maxi
Voltage rating		500 Veff Maxi
Dielectric withstanding voltage		1500 Veff mini
Insulation resistance		5000 MΩ mini

Operating temperature	-40/+100 °C
Hermetic seal	NA Atm.cm3/s
Panel leakage	IP67

**OTHERS CHARACTERISTICS**

Assembly instruction NA

Others :

**MECHANICAL CHARACTERISTICS**

Center contact retention		
Axial force – Mating end	18	N mini
Axial force – Opposite end	18	N mini
Torque	NA	N.cm mini
Recommended torque		
Mating	NA	N.cm
Panel nut	NA	N.cm
Mating life	500	Cycles mini
Weight	9.730	g

Issue : 0045 A

In the effort to improve our products, we reserve the right to make changes judged to be necessary.



**RADIALL**®